

# Focus Profile



Light Efficiency:

31 Lumen/Watt

Light Quality:

CRI: 68.9

Color Temperature:

6450 K

Output: 18420 lm

Peak: 272361 cd

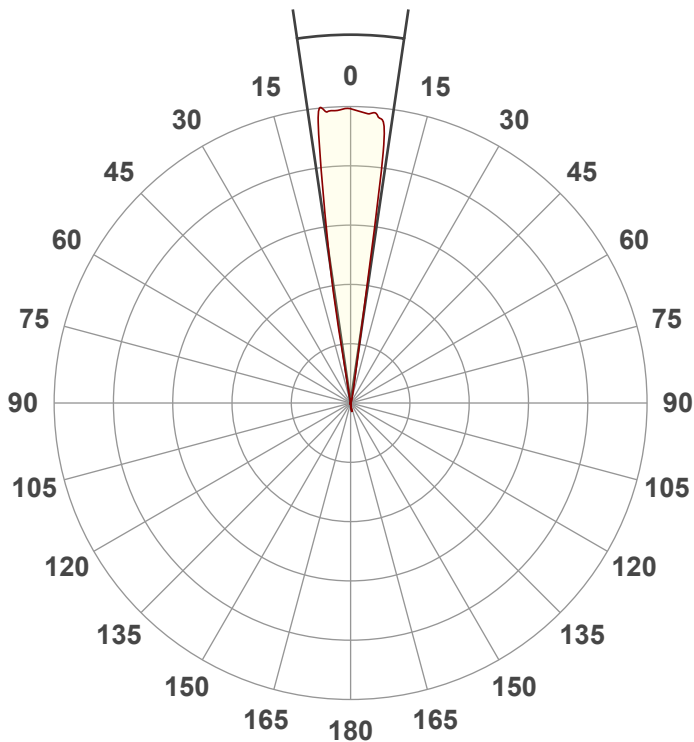
Power: 585 W

PF: 1.0



Beam Angle

16.7°



Test:

Zoom 50% Frost

Date:

9/8/2021

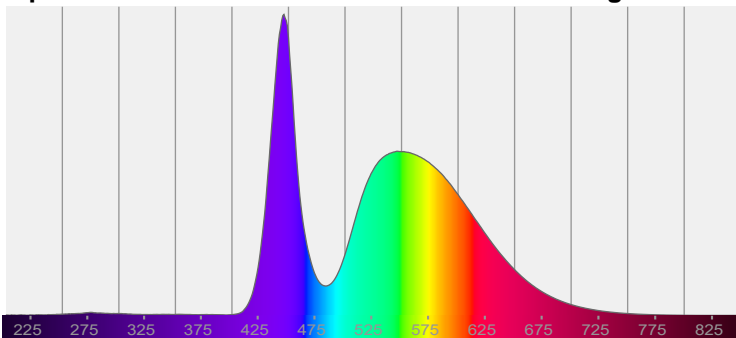
Note:

PT# 0077

CIE 1931  
x: 0.313  
y: 0.333

Spectra

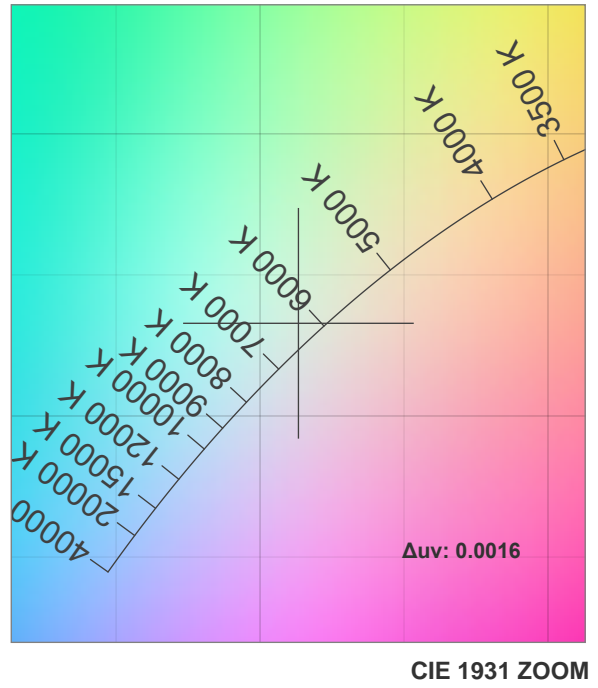
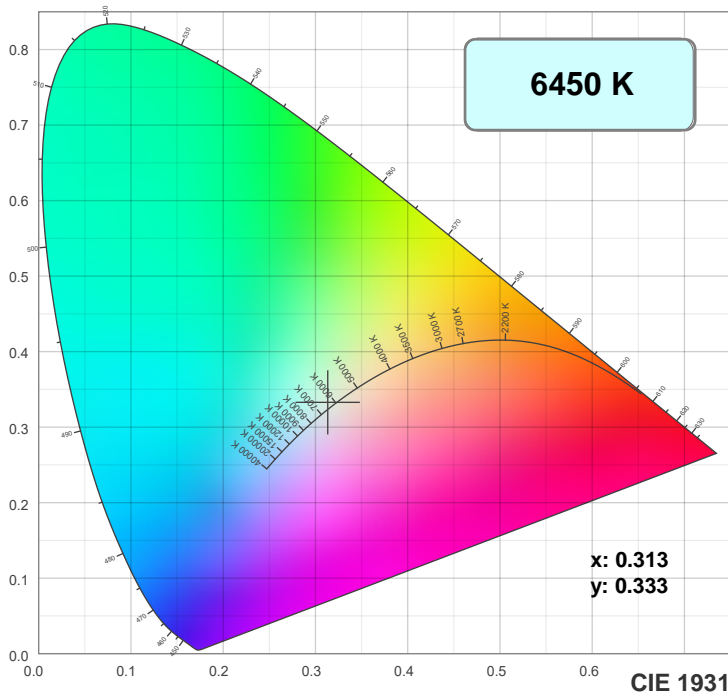
Dominant Wavelength: 558nm



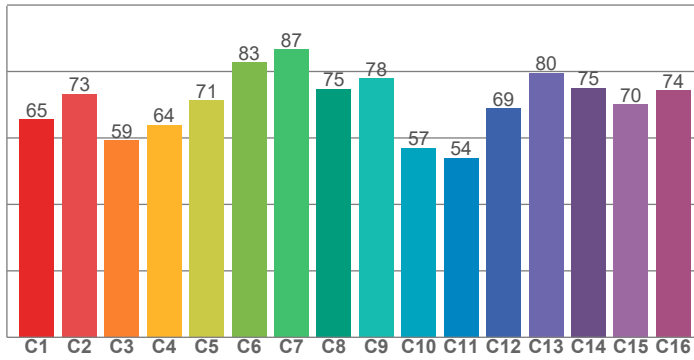
Power

Voltage: 114 V  
Current: 5.13 A  
Frequency: 0 Hz

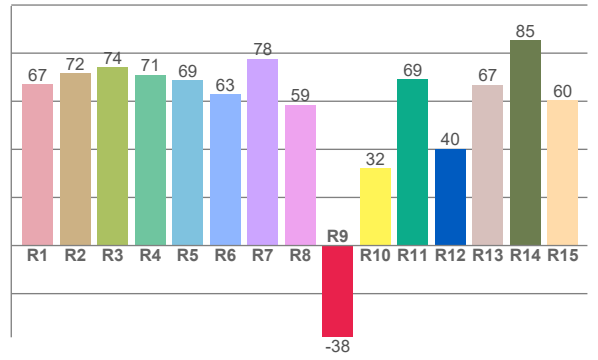
## Color Details



TM30: 70.3



CRI: 68.9 (R1-R8)



CRI R values, only R1-R8 are used to calculate final CRI value

R1	R2	R3	R4	R5	R6	R7	R8	R9	R10	R11	R12	R13	R14	R15
67.0	71.7	74.0	71.0	68.7	62.9	77.7	58.6	-38.2	32.1	69.2	40.2	66.9	85.3	60.3

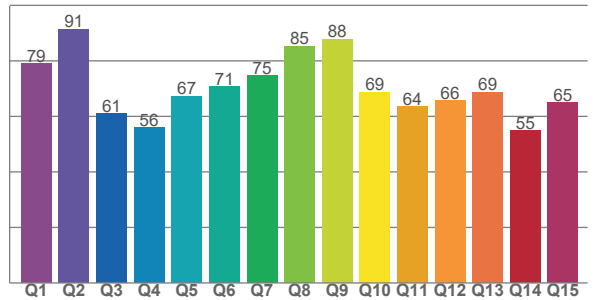
TM30 C values, 16 binned values out of total of 99 C values

C1	C2	C3	C4	C5	C6	C7	C8	C9	C10	C11	C12	C13	C14	C15	C16
65.5	73.3	59.3	64.0	71.2	82.7	86.6	74.7	77.9	57.0	53.9	68.9	79.6	75.1	70.0	74.3

CQS Q values

Q1	Q2	Q3	Q4	Q5	Q6	Q7	Q8	Q9	Q10	Q11	Q12	Q13	Q14	Q15
79.0	91.4	61.0	56.0	67.3	70.6	74.7	85.2	87.7	68.7	63.5	65.7	68.7	54.8	64.9

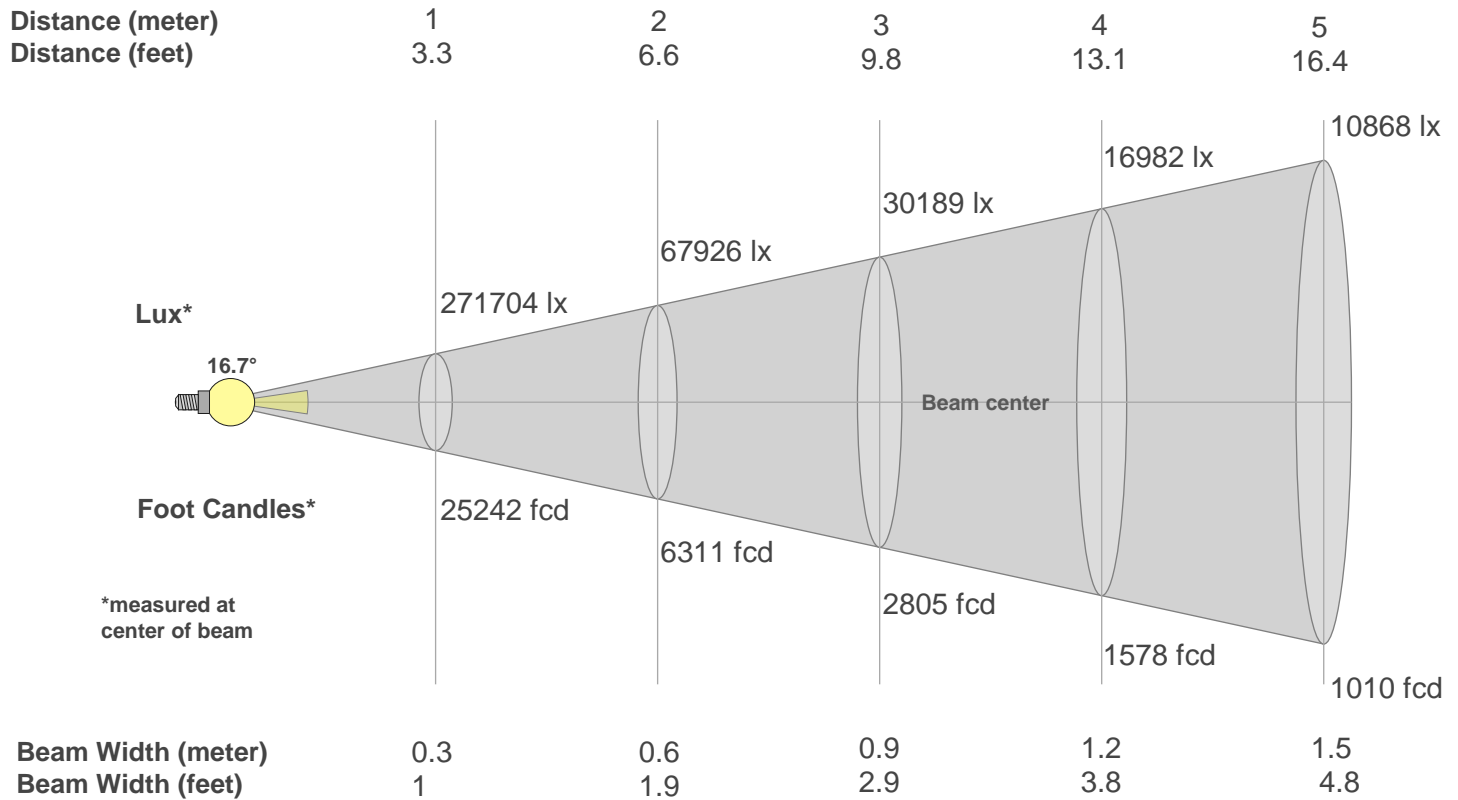
CQS: 68.7



## Color Parameters

Color Temperature	Color Rendering Index	Red Component	Color Fidelity	Color Gamut	Color Quality Scale	Color Coordinate CIE 1931	Color Coordinate CIE 1931	Color Coordinate	Color Coordinate	Color Deviation from Black Body
CCT	CRI	CRI R9	TM30 Rf	TM30 Rg	CQS	x	y	u	v	$\Delta uv$
6450 K	68.9	-38.2	70.3	93.7	68.7	0.313	0.333	0.197	0.314	0.0016

## Beam Details



Beam Intensities from 1-20m

m	1	2	3	4	5	6	7	8	9	10	11	12	13	14	15	16	17	18	19	20
ft	3.3	6.6	9.8	13.1	16.4	19.7	23	26.2	29.5	32.8	36.1	39.4	42.7	45.9	49.2	52.5	55.8	59.1	62.3	65.6
lx	27170 4	67926	30189	16982	10868	7547	5545	4245	3354	2717	2245	1887	1608	1386	1208	1061	940	839	753	679
fcd	25242 1	6310.5	2804.7	1577.6	1009.7	701.2	515.1	394.4	311.6	252.4	208.6	175.3	149.4	128.8	112.2	98.6	87.3	77.9	69.9	63.1

Intensities in 0° C-plane

0°	1°	2°	3°	4°	5°	6°	7°	8°	9°	10°	11°	12°	13°	14°	15°	16°	17°	18°	19°
272K	272K	271K	271K	270K	268K	264K	232K	161K	96K	36K	2K	1K	0K	0K	0K	0K	0K	0K	0K
100%	100%	100%	100%	99%	99%	97%	85%	59%	35%	13%	1%	0%	0%	0%	0%	0%	0%	0%	0%

Intensities in 90° C-plane

0°	1°	2°	3°	4°	5°	6°	7°	8°	9°	10°	11°	12°	13°	14°	15°	16°	17°	18°	19°
272K	272K	271K	271K	270K	268K	264K	232K	161K	96K	36K	2K	1K	0K	0K	0K	0K	0K	0K	0K
100%	100%	100%	100%	99%	99%	97%	85%	59%	35%	13%	1%	0%	0%	0%	0%	0%	0%	0%	0%

Intensities in 180° C-plane

0°	1°	2°	3°	4°	5°	6°	7°	8°	9°	10°	11°	12°	13°	14°	15°	16°	17°	18°	19°
272K	271K	269K	268K	267K	267K	257K	240K	173K	70K	20K	7K	1K	0K	0K	0K	0K	0K	0K	0K
100%	100%	99%	99%	98%	98%	94%	88%	64%	26%	8%	2%	0%	0%	0%	0%	0%	0%	0%	0%

Intensities in 270° C-plane

0°	1°	2°	3°	4°	5°	6°	7°	8°	9°	10°	11°	12°	13°	14°	15°	16°	17°	18°	19°
272K	271K	269K	268K	267K	267K	257K	240K	173K	70K	20K	7K	1K	0K	0K	0K	0K	0K	0K	0K
100%	100%	99%	99%	98%	98%	94%	88%	64%	26%	8%	2%	0%	0%	0%	0%	0%	0%	0%	0%

Beam Angle 50%	Field Angle 10%	Cutoff Angle 2,5%	Intensity Ratio in 120° Cone	Intensity Ratio in 90° Cone
16.7°	19.7°	21.5°	100.0%	100.0%